

# BRIDGING THE GAP BETWEEN GENDER RELATIONS

between women  
leadership positions  
factor in St. Lucia  
growing rapidly in the

the appointments  
the first time has  
for-General, two  
at ministers, a  
ambassador to the  
and to Cuba.

In addition, a record number of women are serving as permanent secretaries and in other senior administrative positions in the Public Service. Then there are the parastatals like the National Insurance Corporation, the St Lucia Solid Waste Management Authority, and the St Lucia Bureau of Standards – all currently headed by women.

Women too are making their mark in the private sector. The St Lucia Hotel and Tourism Association (SLHTA), for example, is headed by a woman for the first time.

And in local entertainment, the first calypso queen was crowned just a few years ago. So the 'glass ceiling' which has historically limited the potential of women, not only here but worldwide, is definitely coming down. It's a positive development that certainly delights Minister for Gender Relations, Sarah Flood-Beaubrun.

"This government has done a lot to ensure that women are placed in spheres of high decision-making but I say there is still a lot more to be done," she says.

*cont'd on page 2*



Musician Monty Maxwell, has become one of the regular acts at the St. Lucia Jazz Festival. He performs with his band, the Le Place Jazz at Le Place Carenage. In the past twelve

years, Carenage are becoming very popular with St. Lucian and visitors alike. Pigeon Island

## EDITORS

### CODE TITLE

After a successful run, Jazz is firmly entrenched as part of the local entertainment scene.

The week-long festival is the crème de la crème of the Caribbean, and its calendar of events is a must for anyone who imagine what May is like without jazz.

To the average St Lucian, the festival is mainly about having fun. The same can also be said for the number of jazz and calypso aficionados from throughout the island beyond who make their way to St Lucia for the festival.

But St Lucia Jazz Festival is a critical economic driver. It is to be a successful visitor attraction, much-needed tourists at a time when business is slow.

The festival's economic impact certainly runs into a number of areas. Both government and private benefit. Hotels, taxi and car rental operators, night clubs, and those providing tourism services.

The festival period provides opportunities for many government agencies and organisations to work in areas of planning and fundraising.

Jazz also serves as a platform for promoting St Lucia as a marketplace. There's a lot of people of the St Lucia brand who previously didn't have. Beautiful St Lucia, thanks to the international festival receives through the channel and other means.

By giving local artists exposure to a global audience, Jazz is certainly an important part of the context of Government pursue the development of the cultural industry as a diversification effort.

Music and other forms of entertainment are big money earners in many countries today. The

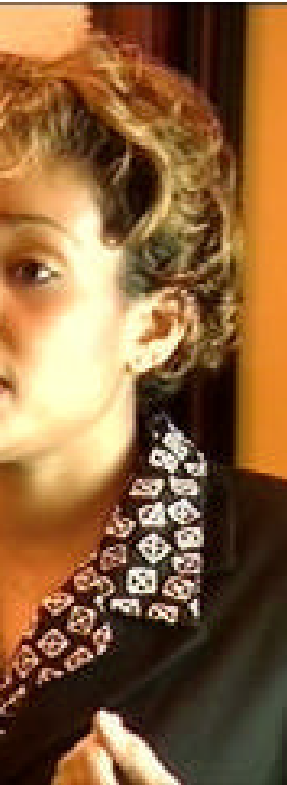
...ion to come forward,  
...s as candidates for  
... of Assembly.

...our population are  
...no reason why we  
...women seated in this  
... says, noting too that  
... on the island are

...ks were made in the  
...uring her contribution  
...04 Budget debate.

...npt to address the  
...historically has  
...en, does not mean  
...oving ahead at the  
...Far from it! What  
...ing to ensure is that  
...ressing the issues of  
...en.

...men have developed  
...system now is all for  
...l against men. It's a  
...concerns Mrs. Flood-  
...me reassuring words



**...mer - Director  
...u of Standards**

...s that perception, the  
...el that the system is  
...ans that we have to  
... and we have to give  
...ity to voice their

...p in men members to have their say at a  
...Government-convened consultation.

“The Men’s Resource Centre will provide a  
...wide range of services to men,” says Mrs.



**Hon Sarah Flood Beaubrun - Minister  
...responsible for Gender Relations**

She lists some: “Individual and group  
...counselling services to provide men with  
...opportunities to address issues they are  
...facing and to receive support from other  
...men going through similar struggles,  
...information and referral about existing  
...services available to men, ...community  
...outreach programmes to include self-  
...improvement classes....”

As Government seeks to promote a better  
...relationship between men and women, an  
...issue standing in the way is the worrying  
...level of gender-based violence which  
...sometimes results in death.

Women are mostly the victims at the hands  
...of men but, as Mrs. Flood-Beaubrun  
...acknowledges, men sometimes are at the  
...receiving end.

It’s hard to say whether the incidence of  
...gender-based violence is actually on the  
...increase in St Lucia. Until recently, the way  
...in which crime statistics were put together,  
...blurred the picture.

So that what may be coming across as an

Concerned that children too are sometimes  
...victims, she is urging everyone to play an  
...active part in combating the problem. She  
...is warning of serious implications if no  
...decisive collective action is taken.

Scientific research suggests that abused  
...persons often end up as abusers, thereby  
...perpetuating a cycle of abuse.

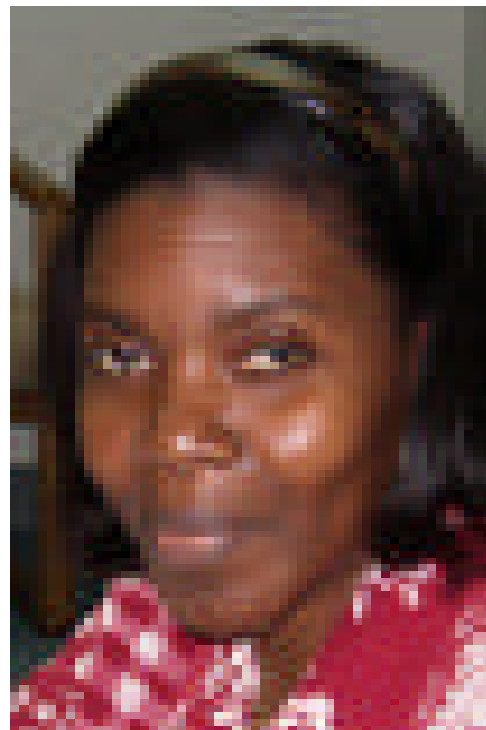
A year and a half ago, Government opened  
...the first-ever support centre on the island  
...to provide temporary refuge for battered  
...women who have had to run, often with their  
...children, from their abusers.

The fully stocked shelter, which operates  
...on a 24 hour basis, has so far taken in  
...close to 50 women for protection and over  
...70 children.

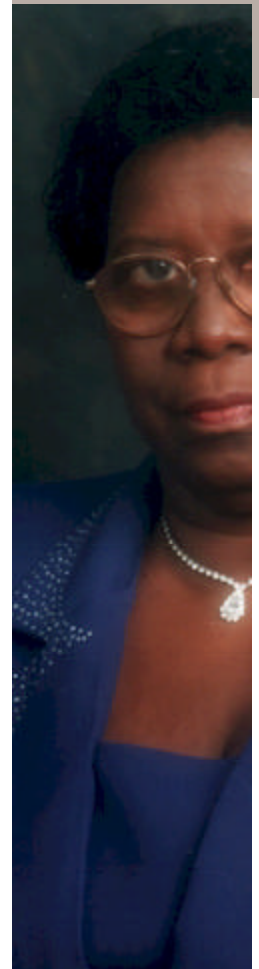
“These are real cases where women came  
...in with broken arms, black eyes, blood  
...pouring down their face,” says Mrs. Flood-  
...Beaubrun. “You are talking about women  
...who span all walks of life, all social strata...”

“We do not judge our success by the  
...number of persons who come to the  
...shelter...,” she explains. “Our goal is to  
...ensure that we eradicate or substantially  
...eliminate the scourge of domestic violence  
...from our society. We would achieve our goal  
...when a shelter would no longer be  
...necessary.”

What particularly peeves the Gender  
...Relations Minister is the thought that some  
...abusers are still on the loose and pose a  
...risk to society because crimes they have  
...committed, including murder, have  
...remained unsolved.



**There is no  
...we shouldn't  
...women sea  
...august cha**



**H.E. Dame Pe  
...Governor General**

She says society as  
...police, has to accept  
...state of affairs.

“Sometimes there ar  
...have information wh  
...the police. There has  
...has to be a national e  
...is prepared to do wh  
...ensure that we revisit  
...says.

Mrs. Flood-Bea  
...Government’s plan to  
...Division of the High  
...a year-round basis. S  
...a positive effect on  
...is delivered, especia

“We have so many rap  
...of our victims do not  
...forward because the

development  
ed project,  
get underway  
ming year.

**\$9.5 million**  
**health centres**  
**stand are to**  
**irs and will be**  
**re necessary,**  
**health care**  
**urniture and**  
**re CDB is**  
**approve the**  
**y.**

become necessary  
nt of existing health  
need of rehabilitation  
result of inadequate  
years, weak security

sector," says Prime Minister Dr Kenny  
Anthony, "to increase the standard of  
delivery of health care, and to provide vital  
information to the Ministry of Health,  
Human Services and Family Affairs on the  
physical condition of the facilities."

"This, in turn," he adds, "will facilitate the  
completion of a comprehensive current  
schedule of capital maintenance  
interventions with the corresponding  
budgetary proposals."

At the national level, health care delivery  
is also poised for a major boost as  
Government presses ahead with laying the  
groundwork for the start of construction of  
a new general hospital and a new  
psychiatric hospital.

The 15 health centres earmarked for repairs  
are: Grand Riviere, Fond Assau, La  
Ressource, Richfond, Micoud, Mon Repos,  
Deruisseaux, Belle Vue, Grace,  
Mongouge, Fond St Jacques, Canaries, La  
Croix, La Clery, Bexon.



The Gros-Islet Polyclinic: *New directions in access to be*

# RISE FOR FIRE SERVICE



ood Beaubrun flanked by government officials and firemen.



Among the many lessons of the  
tragic events of September 11,  
2001 in New York, is a powerful  
reminder of the invaluable and  
selfless public service rendered by  
fire fighters.

The performance of the St Lucia  
Fire Service is something of which  
the Government is proud. In fact,  
Minister for Home Affairs, Sarah  
Flood-Beaubrun, who has  
responsibility for the Fire Service,  
calls it "a model department".

"They have a daunting task," she says.  
"Sometimes we think firemen and women  
only put out fires but they respond to all  
other kinds of emergencies."

For example, freeing trapped victims in  
motor vehicle accidents, cleaning up oil  
spills, flood rescue.

Noting the Fire Service has been "long  
starved of resources", Mrs Flood-Beaubrun  
says things are looking up for the  
Department with the construction of a

"Under this govern  
minister of finance, t  
investment in the Fir  
has ever been in the  
she says.

"We opened and con  
Islet Fire Station  
commissioned the D  
we've renovated the  
(and) plans are well  
construction of the Vi  
she adds.

Repairs were also ca  
accommodation at tl  
George F.L. Charles

Simultaneous with th  
physical plant and t  
equipment, more of w  
this year, fire officers h  
various types of tra  
make the service mc  
demands of the 21<sup>st</sup> (

"We need to apprecia  
not just judge them in  
they respond to an  
Flood-Beaubrun. "Th

g results; the one-  
Ministry of Social  
certainly having a  
improving life in  
id the island.

quality of life for the  
try .....is what the  
Transformation is  
minister, Menissa  
ends considerable  
eeting residents of  
rked for assistance.

primary mandate the  
grammes aimed at  
ffering in St Lucia,"  
sly several agencies  
itly and in an ad hoc  
e common goal of  
s pockets of poverty

the result is more effective delivery of

benefits to communities in need.

Over the past five years, the BNTF and PRF together have spent some \$15 million on a variety of projects ranging from the construction of footpaths, drains, community roads, water delivery systems, school repairs, establishment of information technology training centres. The list goes on and on.

### Enterprise Development

The BELFUND, on the other hand, is focused on a single activity: micro-enterprise development. Since starting operations three years ago, it has disbursed more than \$1.2 million in loan financing to help poor citizens realize the dream of starting a small business to provide employment and an income for themselves and their families.



**Clergy providing easier access to homes: the PRF and BNTF financed such community projects islandwide.**

he wisdom of the  
inister, the Ministry of  
ion has marshalled  
prises and has now  
matic approach to  
challenges that we

Miss Rambally provided a detailed account of her ministry's stewardship during her contribution to the recent 2003-04 Budget debate in the House of Assembly. Within the structure of Government, Social Transformation has replaced what used to be the Ministry of Community Development. Over the next 12 months, Miss Rambally says, there are some communities which will be receiving attention through her Ministry that were promised assistance as far back as 30 years ago.

estion are the Basic  
(BNTF), the Poverty  
(RF) and the James  
rprise Development  
nich have been at the

rate of implementation  
against the BNTF.

"In 1999-2000, the B some \$750,000 which cent of our project Rambally.

"By 2001, we we disbursement of \$1. some 30 per cent in te rate," she adds.

"By 2002, we have b 54 per cent of the proj of 23 per cent in implementation."

In July, the BNTF underway. There is a many more community benefits.

Miss Rambally is rec to young people w business but do not from commercial ba channels of financing

### Hon. Menissa Rambally - Minister for Social Transformation Local Government and Culture

"This government is ensuring that the people of this country have the basic amenities that they were denied of so long," she says.

The PRF's work programme for the coming year will continue to place emphasis on providing basic facilities – footpaths, drains, etc., — for mostly rural communities, using labour-intensive construction methods wherever possible to create employment in the beneficiary communities.

Home repairs for the elderly and needy single parents will also receive major attention.

Specific projects undertaken by the PRF over the past year include a footpath and drainage project in Au Leon, Dennery, providing an access road for Fond St Jacques, providing an emergency ramp and fencing at the Soufriere Hospital, expansion of the Monchy Combined School in Gros Islet, and the establishment of a community centre in Morne Rouge, Choiseul, geared towards meeting the needs of the elderly.

The Morne Rouge community centre concept breaks new ground in St Lucia. It's a project Miss Rambally proposes to take to other communities so that more

The BELFUND, w anniversary on May 3 100 jobs to date and by the third quarter o

"We need to encoura country to be industrio Fund is an enterpris them," Miss Ramball



aimed at minimizing human suffering in St Lucia. Several agencies operated independently and in an ad hoc manner, all with the common goal of attacking the various pockets of poverty around our country." Hon. Menissa Ramba

on Authority (NCA), giving a contribution to the development of St Lucia a more vibrant economy. Each agency falling under the NCA provides information.

for keeping beaches clean and for operating projects in the countryside through the use of community gardens, for operating projects in the north have made a contribution to keeping the main tourist belt.

her agency which has been operating in many communities across the island as the National Development Agency. Miss Rambally says that the work of the National

for this year is the development of recreational parks and picnic locations around the island for children.

to launch an island-wide campaign in collaboration with the Ministry of Fisheries.

for our communities to contribute to the effort to lift the ambience of the island, she says.



**Mr. Lucian Isidore - Director Community Development and Social Transformation**



**Community based self-help is being promoted by the**



## MORE HELP FOR NEEDY FA

Despite the challenging economic times which have placed additional pressure on public finances, Government is making sure that adequate provision is made for the pressing needs of society's less fortunate.

Most importantly, according to information released by the Division of Family Services during the recent Budget debate, assistance is being provided to more people than ever before.

In the last financial year, the Division paid out \$2.1 million in public assistance to some 2,882 needy families. The level of disbursements was up by 10 per cent on the previous year, and the number of assisted families rose by eight per cent.

"Overall, 4,000 persons benefit from public assistance," says Parlane of the Ministry of Health, Human Services and Family Affairs, Jon C. He continues to reflect that the elderly are proportionately the group that benefit the greatest amount of the disbursed funds."

"Further, women tend to be more represented for they are less economically active and they tend to live longer than their male counterparts," he added. He noted that although the greatest number of beneficiaries come from the rural areas, proportionately overall, the greater number of applicants continue to come from the districts of Dennery, Micoud, Soufriere, Vieux Fort, Laborie and Chateaufort.

Besides the elderly, displaced youth and children at risk are the other major beneficiaries of public assistance which, in the 1998 financial year, amounted to \$2.1 million. In 1998, there were 2,493 beneficiaries.

## ESTABLISHMENT OF AN INTEGRATED REGULATORY UNIT



**Kenny D. Anthony**

“Mr. Speaker, the Government of Saint Lucia proposes to establish an integrated regulatory framework for the financial institutions operating within its jurisdiction. These institutions include banks, trust and insurance companies operating in both the domestic and offshore sectors, credit unions, building and loan societies and money transfer agencies. This approach is consistent with a recommendation of the Monetary Council of the ECCB, which urged that efforts be made to have a framework established by December, 2002.

The rationale for establishing a Regulatory Unit is compelling as we observe the changing landscape in the financial sector. No longer are banks relying on traditional banking practices to derive income. There is now the introduction of E-banking and telephone banking. We are witnessing mergers and acquisitions in the banking and insurance communities. Insurance companies are beginning to offer non-insurance products and services, while banks are engaging in non-banking business. In some countries of the OECS, Credit Unions have asset bases that are larger than indigenous banks. The establishment of money transfer companies is a relatively recent phenomenon that has introduced challenging regulatory issues.

As a result of these changes, it is necessary to review the way that these institutions are regulated and supervised. It is perhaps time for us to look at the melding of our resources. In many respects there are variances in the quality of our resources in the various regulatory agencies that have been established. For example, in the International Financial Services sector, because of the pressures exerted by international institutions, we have found it necessary to employ specialized expertise. However, this may not necessarily be the case in the domestic regulatory environment.

Consequently, we believe it necessary to review the current regulatory and supervision practices. Therefore, we will be pursuing the establishment of an Integrated Regulatory Unit for the supervision and regulation of financial institutions in the domestic and international financial services sector.”



## ESTABLISHMENT OF REVENUE

“Mr. Speaker, for some time now our two main agencies, the Inland Revenue Department and the Customs Department, have gone through business process exercises which have seen the adoption of modern The reorganisation efforts have resulted in the administrative structures, the revision of legislative integrated computer systems, and more focused

The Inland Revenue Department has recently up computer programme, SIGTAS, which will result income tax returns, more secure cash handling technical problems. Soon the Department will services to its customers. The Customs Department preparing for the upgrade of ASYCUDA to “ASYC

While these improvements are occurring, the opportunities between the Departments have not been fully significant synergies that can exist are not realized. Departments often deal with the same customer who imports items for sale and processes an Department is the same person with whom Department has to interact when that individual the sale of those imported items. There is, therefore both Departments to share information seamlessly of both Departments are getting more sophisticated Departments must find creative ways to keep ahead

As the Departments become more developed in necessary to ensure that administrative procedures sustain and enhance the gains that have been achieved. Mr. Speaker, I wish to announce that the Government Revenue Authority, which will become an administrative the operations of both the Inland Revenue and Customs

The concept of a Revenue Authority or Commission such entities exist in quite a few of the countries in the Caribbean, Revenue Authorities already Guyana, while several other countries are contemplating of Revenue Authorities. This initiative is consistent Pledge to appoint a Revenue Commission comprehensive review of the revenue collection recommendations on the streamlining of operational collection efficiency.

The objectives of the Revenue Authority will be:

- To rationalize the operations of the Customs and Inland Revenue Departments;
- To introduce more professional, efficient and cost-effective practices;
- To streamline the common services of personnel development and maintenance of IT systems, and administrative support;
- To increase the effectiveness of technical activities synergy of the merged agencies, such as audits

As you can appreciate Mr. Speaker, we are concerned what hitherto were two separate and distinct cultures of the Customs Department are largely influenced by imperatives, while the operations of the Inland Revenue are influenced by attestation responsibilities. The of these two agencies will have to be carefully planned

I propose, Mr. Speaker, within this year, to set up a committee chaired by the Permanent Secretary of the Ministry of Economic Affairs, and comprising private and public to look at the administrative, legal and technical establishment of this Revenue Authority.”

ary outlay of \$861.3 million derived from the following

Revenue of \$477.1 million

Revenue of \$6.5 million; Revenue of \$60.7 million, of which \$1 million is from EU

Revenue of \$91.0 million, of which \$91.0 million represents a surplus from previous fiscal year of \$22 million; and \$204.0 million from donor funds, mainly from donor funds and largely from the Budget, of \$204.0 million

Revenue inclusive of debt of \$6 million is more than current revenue, the revenue from bonds in the amount of \$22.0 million from additional \$6.5 million coupled with a small amount available for capital expenditure of \$1 million.

Total recurrent revenue of \$1.1 million in 2003/04, a marginal increase of 1.0 per cent over previous year and 4.2 per cent over year-end preliminary figures. The projected improved revenue, in part, the acceleration of economic activity and, to a lesser extent, revenue measures.

Revenue of \$410.1 million or 41.1 per cent of total revenue. This is an increase of 1.1 percentage points over the projected figure last year. Revenue which includes licence fees and fines, is estimated at \$10.0 million or about 1.4 per cent of total revenue.

Revenue that is forecast to be derived from international trade

unities, facilitate economic and ease traffic congestion. Prime *enny D. Anthony* presented some statistics and plans during the of the 2003 - 2004 budget.

the Government accepts that the four road infrastructure must not be highways. If we are to maximize the from eco-tourism, then it is necessary decent access roads to the principal and enjoyment. Unquestionably, too, some deterioration of our tertiary road e past decade, and urgent remedial ary. Government has heard the cries, Fond St. Jacques and the motorist in

ase roads could not be secured from sources such as the Caribbean nk. The Bank places a low priority on ls for eco-tourism. The Government o the Agence Francais de Development ed, after undertaking a consultancy, to f \$27 million on extremely generous s include a seven year moratorium on rincipal and interest, and an interest ent. These terms are exceedingly e almost unheard of in these times. I y express the appreciation of the people of Saint Lucia to the French indeed, the AFD. They continue to be ers to our development.

ect, fifty four (54) sections or 130 tertiary road will be targeted for ar a period of twenty one months, at a 03 million. The works will be divided e contract packages comprising roads b) Central Region and (c) South of the expected to commence this financial of \$12.3 million is allocated for the

	PRIORITY COEFFICIENT (in %)	
1	Fond Assau – Chassin Ch 1900 to Ch 2800	0.900
2	Etangs-Union Vale-Delcer	3.890
3	Le Riche-La Pointe Delcer	6.100
4	Dennery-St. Joseph Errand Ch 0 to Ch 5500	5.500
5	Marquis Estate Road	1.700
6	Fond Assau-Chassin Ch 2800 to Ch 4400	1.600
7	Paix Bouche -Boguis Ch 0 to Ch 538	0.538
8	Paix Bouche -Boguis Ch 538 to Ch 1547	1.009
9	Fond Saint Jacques – Mgny	5.550
10	Mamiku Loop	1.929
11	Mahaut-Six Lieu Ch 0 to Ch 1900	1.900
12	Mahaut-Six Lieu Ch 1900 to Ch 3000	1.100
13	Guesneau – Forestiere	2.900
14	Venus-Millet	0.600
15	Dennery-St. Joseph Errand Ch5500 to Ch7600	2.100
16	Canaries Valley Road Ch 0 to Ch 800	0.800
17	Canaries Valley Road Ch 800 to Ch 4550	3.750
18	Desbarra Road	2.600
19	Anse La Raye – Venus Ch 0 to Ch 600	0.600
20	Volet – Mahaut	7.300
21	Sulphur Springs Road Ch 0 to Ch 1035	1.035
22	Monchy – Desrameau	1.600
23	La Borne Ch 0 to 944	0.944
24	Diamond –Fond St. Jacques Ch 0 to Ch 700	0.700
25	Sir John Compton Dam Road	1.410
26	Mahaut-Calypso	3.300
27	Marquis – Boguis	1.250
28	Des Cartier Ch 0 to Ch 800	0.800
29	Des Cartier Ch 800 to Ch 1319	0.519
30	Millet –Tete Chemin	2.354
31	Victoria – Martin – Mongouge – Le Riche	4.300
32	Errand – Deux Branches	1.800
33	Bois Canoe Road	0.200
34	Chateau Belair Ch 0 to Ch 100	0.100
35	Bellevedere – Anse La Liberte’ Ch 0 to Ch 400	0.400
36	Bellevedere - Anse La Liberte’ Ch 400 to Ch 700	0.300
37	Cas En Bas & Extension Ch 450 to Ch 873	0.423

Rank	LIST OF PROJECTS	Length in Km	Cost
38	Rodney Bay Main Road Ch 0 to Ch 568	0.568	
39	Esperance- Raveneau	1.300	
40	La Borne Ch 944 to 4500	3.556	
41	Riviere Salee Ch 0 to Ch 1229	1.229	
42	Anse La Raye – Venus Ch 600 to Ch 3600	3.000	
43	Anse La Raye – Venus Ch 3600 to Ch 8500	4.900	
44	Riviere Salee Ch 1900 to Ch 2285	0.385	
45	Vieux Fort – Moule a Chique Main	3.200	
46	Morne Panache	1.914	
47	St. Lawrence Estate	3.193	
48	Bois D Orange – Wyndjammer	1.672	
49	East Winds Road Ch 0 to Ch 500	0.500	
50	East Winds Road Ch 500 to Ch 699	0.199	
51	Grace – Augier	1.780	
52	Augier-Cartien Ch 0 to 1400	1.400	
53	Delcer –Bois D’inde-Raveneau	2.200	
54	Grace-Joyeaux-Bellevue	3.048	





# HO IS COMING ST. LUCIA

all relatively flat  
or the stay-over  
tourism market,  
reached a peak  
2. The Caribbean  
in the strongest  
rivals of 8.8

Notwithstanding its potential  
for growth, this market offers  
sub-optimal opportunities for  
value added in terms of total  
expenditure. However, it  
contributes significantly to the  
sustenance of small properties

**MICHELE WOOS 'EM:** Sweet-singing Domi  
sensation, Michele Henderson, backed by popula  
Exile One also hailing from the Nature Isle, h  
rocking at Balenbouche during Jazz in the South

Henderson, a bright rising star in Caribbean mus  
audience with a mix of creole and contemporary  
hits. Afterwards, Exile One took the audience o  
journey showing the evolution of creole music fr  
the present, through their many hits.

**YEAR OF THE CI**